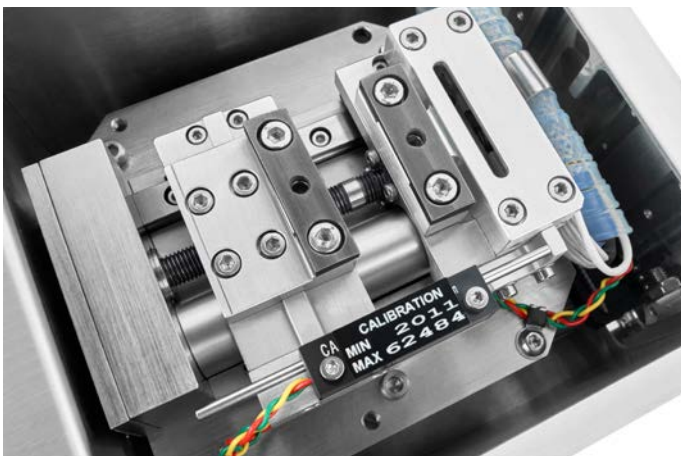


# Phenom Tensile Sample Holder

Stretch and compress your samples in the Phenom XL Desktop SEM





Close up Phenom Tensile Sample Holder

Tensile testing is a way of determining how materials will react when they are pulled apart or pushed together - when a tension force is applied. It is one of the simplest and most widely used mechanical tests. By measuring the force required to elongate a specimen to breaking point, material properties can be determined that will allow designers and quality managers to predict how materials and products will behave in their intended applications.

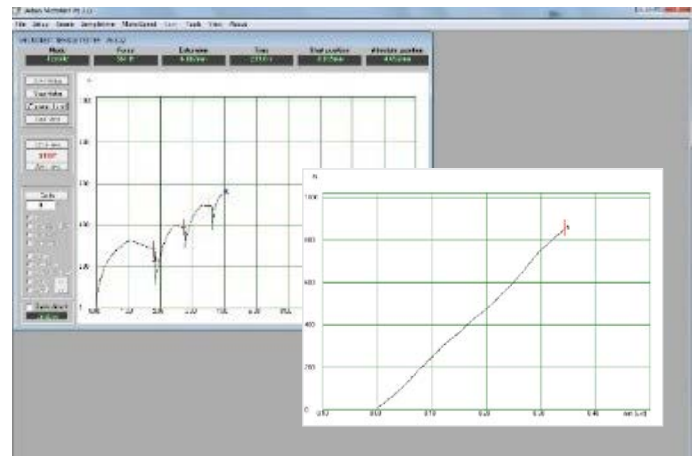
#### User benefits

The tensile/compression stages have been designed in collaboration with Deben for use within the Phenom XL. The modules allow many different materials to be deformed and stretched at loads of up to 100Kg (1kN). The maximum load depends on the load cell fitted. There are two modules and load cells available: 150N and 1000N; the choice depends on the type of sample and the tests being carried out.

Applications are many and various. The 150N version is suitable for observing fiber clusters, polymer films, thin metal films, biological and plant material. The 1000N model is suitable for observing fiber clusters, thin metal and polymer films, biological and plant material. The standard operating range is 1.5N to 150N for the 150N model, and 10N to 1000N for the 1000N model.

#### Tensile testing is used to:

- Determine batch quality
- Determine manufacturing consistency
- Aid the design process
- Reduce material costs and achieve lean manufacturing goals
- Ensure compliance with international and industry standards



Software screenshot. The software can be installed on the ProSuite PC and is able to depict the forces measured during the experiment.

### Specifications

#### Operation

Tensile and compression operation

#### Leadscrew

Dual threaded leadscrew with both jaws moving

#### Clamps

Serrated and flat sample clamps

#### Maximum force

1 kN or 0.15 kN

#### Speed range

0.2 mm/min to 1 mm/min

#### Travel

10 mm

#### Stroke

10 mm (from 10 mm to 20 mm)

#### Position resolution

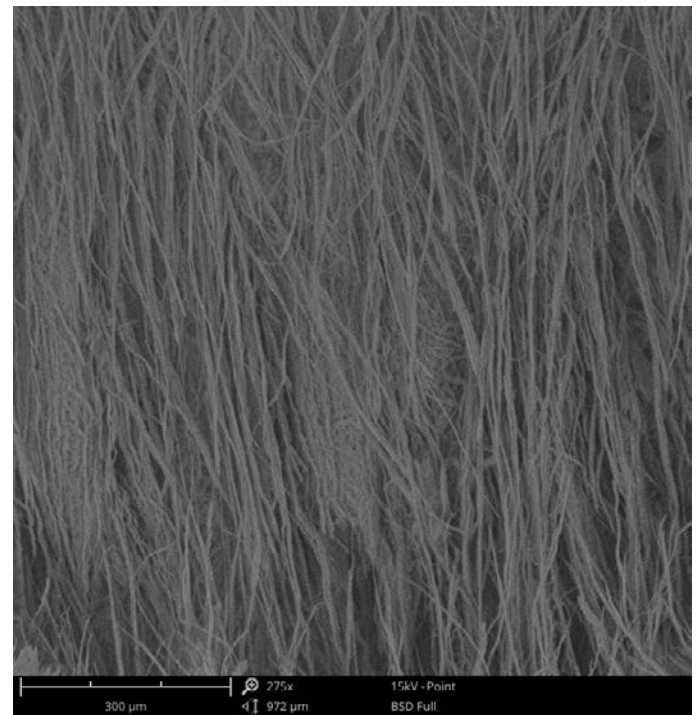
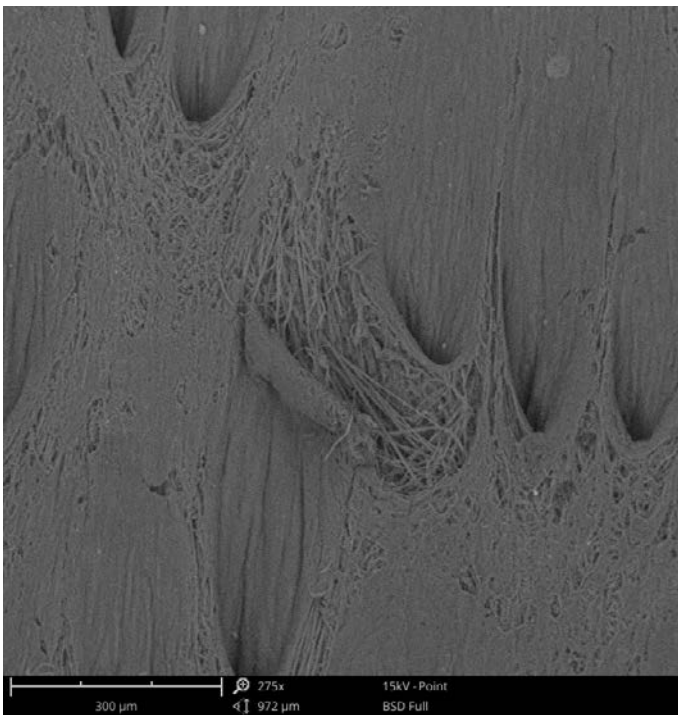
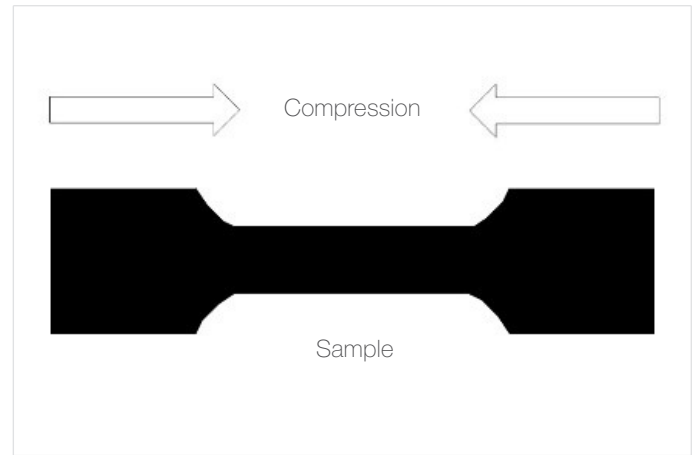
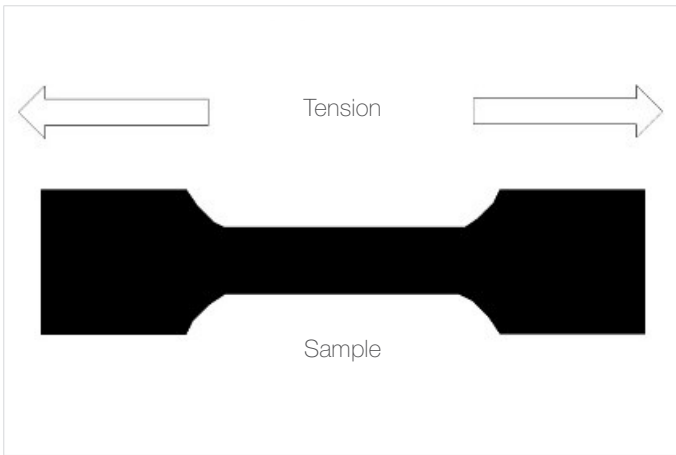
300 nm

#### Position linearity

1% of full travel

#### Maximum sample size

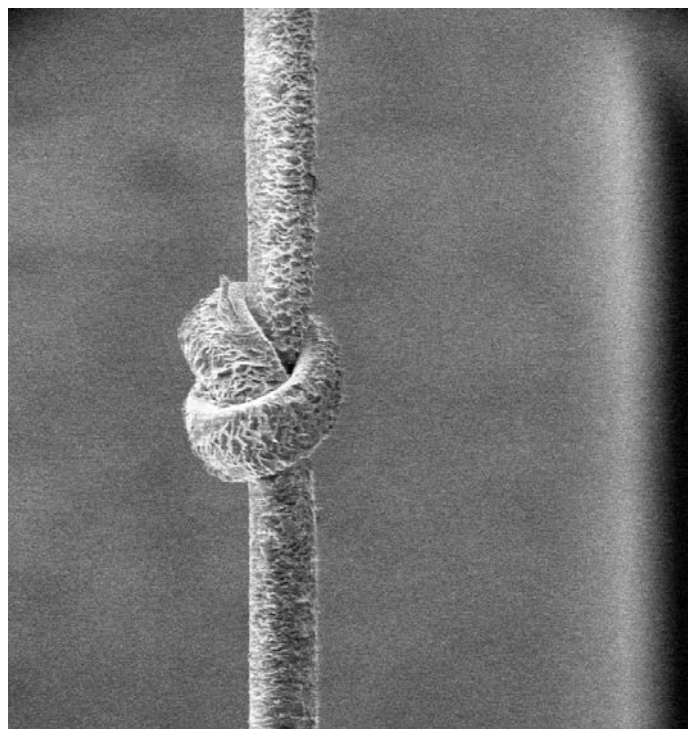
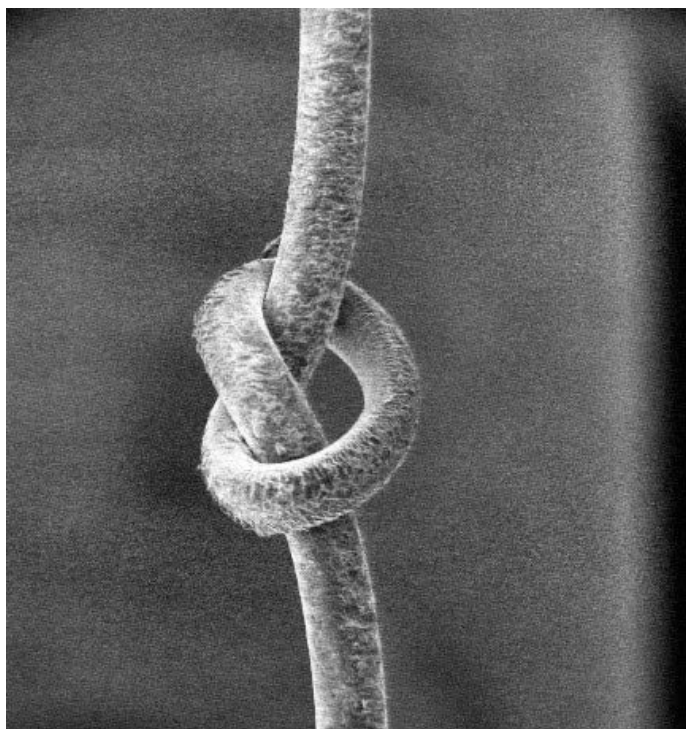
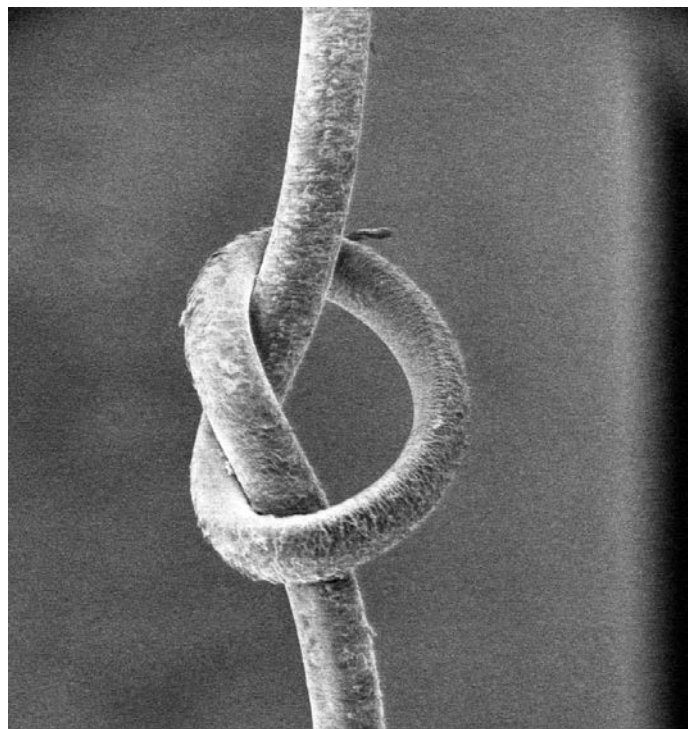
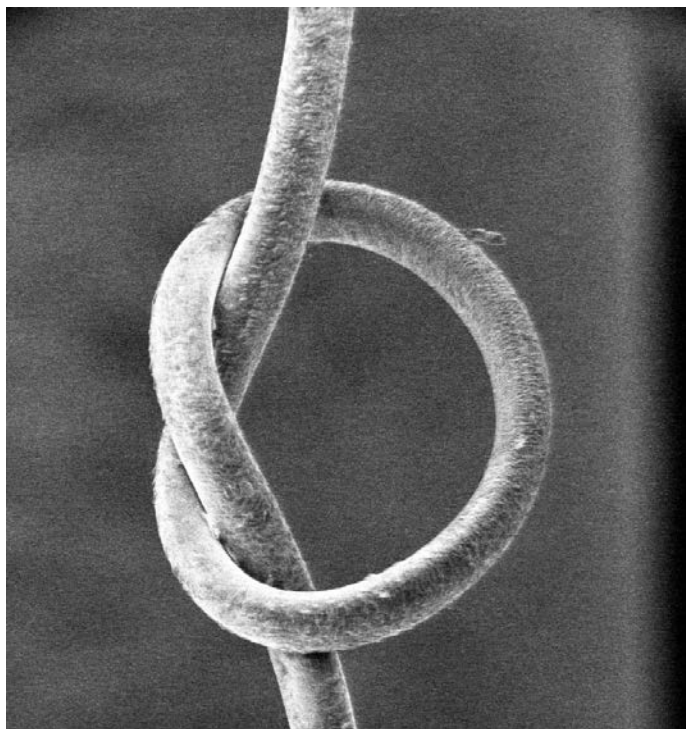
- Thickness: 2.5 mm
- Length: 25 mm
- Width: 14 mm



A leather sample being pulled apart

### Tensile and compression stress

The Thermo Scientific™ Phenom Tensile Sample Holder offers tensile as well as compression stress. Cyclic testing is also an option. Materials can be characterized by their strength. Compressive strength, or compression strength, is the capacity of a material or structure to withstand loads tending to reduce size, as opposed to tensile strength, which withstands loads tending to elongate. In other words, compressive strength resists compression (being pushed together), whereas tensile strength resists tension (being pulled apart).



Endurance test of human hair observed with a SE detector

Available in the US exclusively from:

	<p>888.777.5573 480.758.5400 www.nanoscience.com info@nanoscience.com</p>
---	---

Find out more at [thermofisher.com/phenomworld](http://thermofisher.com/phenomworld)

**ThermoFisher**  
SCIENTIFIC

*Phenom-World B.V. Dillenburgstraat 9T, 5652 AM Eindhoven, The Netherlands.*

**For Research Use Only. Not for use in diagnostic procedures.** © 2018 Thermo Fisher Scientific Inc. All rights reserved. All trademarks are the property of Thermo Fisher Scientific and its subsidiaries unless otherwise specified.